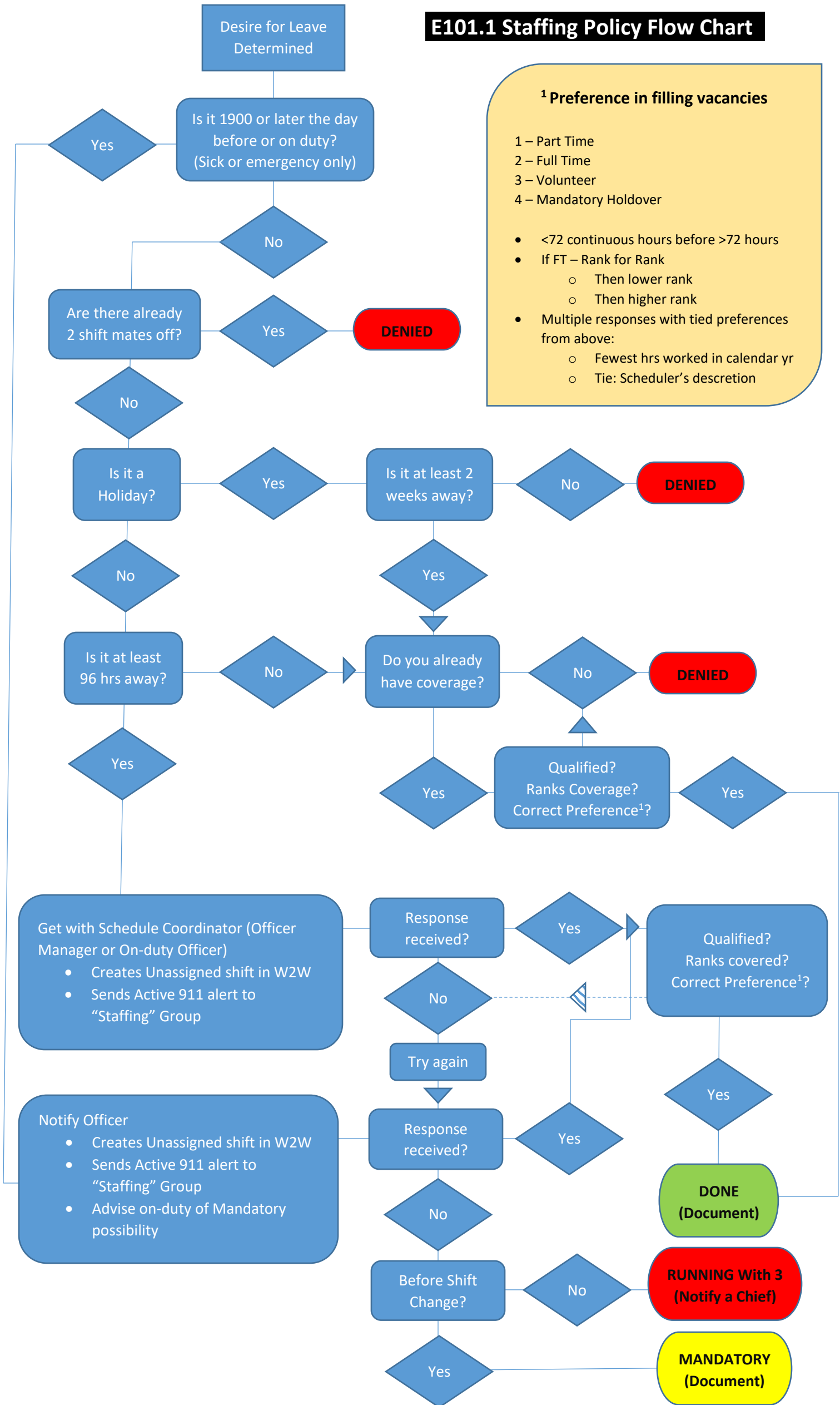


# E101.1 Staffing Policy Flow Chart

**<sup>1</sup> Preference in filling vacancies**

- 1 – Part Time
- 2 – Full Time
- 3 – Volunteer
- 4 – Mandatory Holdover

- <72 continuous hours before >72 hours
- If FT – Rank for Rank
  - Then lower rank
  - Then higher rank
- Multiple responses with tied preferences from above:
  - Fewest hrs worked in calendar yr
  - Tie: Scheduler's discretion



Use of the flowchart does not relieve the member from the full understanding and implementation of Policy E101.1 – Operations Staffing