

AFD MID RISE ALARM TACTICAL WORKSHEET

Initial Radio Report

Name Incident

Mode of Operation

Declare Alpha

Locate CP

Current Conditions / Involvement

Current Assignments

Additional Assignments

Initial Command Tasks

PrePlan | 360 | MDC | Map | Timer | EMRG Ch | No Scan

Incident Duration		Dispatch Time:			
10	20	30	40	50	60+
Progress?	Strategy?	Alarms? Rehab? Relief?		Relief? Food? Operational Periods?	
THE BASICS					
Incident Priorities					
Life Safety					
Incident Stabilization					
Property Conservation					
Strategic Objectives					
Command Priorities	Rescue	Initial Attack	Size Up		
	Exposure		Locate Fire		
	Confinement		ID Flow Path		
	Extinguishment		Cool from safe location		
	Overhaul		Extinguish		
Ventilation	Rescue				
Salvage	Salvage				

MID RISE Assignments			
	Investigate	Offensive	Defensive
1 st Pumping Apparatus	Investigate	FIRE ATTACK 1	Confine and Exposures
2 nd Pumping Apparatus	Prep for BACKUP	FIRE ATTACK 2	Water Supply
3 rd Pumping Apparatus	Standby at Hydrant	WATER SUPPLY	Hydrant
4 th Pumping Apparatus	Standby at Hydrant	STANDBY	Hydrant
1 st Captain	Investigate	INSIDE TRUCK	Position for Master Stream
2 nd Captain	EVAC GROUP	EVAC GROUP	EVAC GROUP
3 rd Captain	Standby	VENT GROUP	Standby
4 th Captain	Standby	OUTSIDE TRUCK	Standby
1 st BC	COMMAND	COMMAND	COMMAND
2 nd BC	Standby	DIVISION X	OPS, DIV, OTHER
Safety	Safety	Safety	Safety

DISPATCHED UNITS

1st Alarm

1 BC _____

2 BC _____

1 RH _____

2 RH _____

3 RH _____

4 RH _____

1 ENG _____

2 ENG _____

3 ENG _____

4 ENG _____

MEDIC _____

2nd: 2 BC 4 RH
1 DC 8 ENG

Offensive Assignments

Command _____

DIV X _____

Inside Truck _____

Fire Attack 1 _____

Fire Attack 2 _____

Evac Group _____

Vent Group _____

Outside Truck _____

Water Supply _____

Standby ENG _____

Transition:

- | | | |
|---|---|---|
| <input type="checkbox"/> Tactical Withdraw | <input type="checkbox"/> PAR | <input type="checkbox"/> Collapse Zones |
| <input type="checkbox"/> Emergency Evacuation | <input type="checkbox"/> Divisions & Groups | <input type="checkbox"/> Alt Channel |

Benchmarks

- 2 in / 2 out
- Entry Size-up
- Backup Team
- RIC Team
- Safety Officer
- Primary Search
- Secondary Search
- Fire Knocked Down
- Fire Under Control
- Fire Extinguished
- Salvage Complete

Tasks

- Air Monitoring
- Gas Utility
- Electric Utility
- Water Utility
- Health Department
- Investigator
- Red Cross
- CSG
- PIO
- Board Up
- Air Truck

MAYDAY / RIC Considerations

Maintain ongoing size up, accountability, disciplined communications, coordinated ventilation

Initial Reaction to the Mayday

- Control Communications
- Define the Problem
- Set Priorities
- Determine Response
 - __ *Simple Grab and Go*
 - __ *Complex Grab and Go*
 - __ *Simple RIC (I.D. continues ops)*
 - __ *Complex RIC (extended operation)*
- Size up Mayday and Incident Needs
- PAR
- Call Additional Resources EARLY (greater alarm)
- Don't forget the fire

TIME OF EVENT

- 5 min
- 10 min
- 15 min
- 20 min
- 30 min

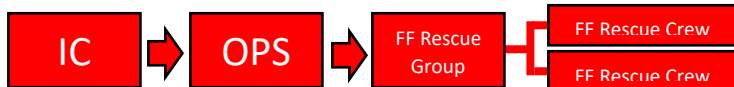
Terminology

"Unit ID" RIC (allows for multiple RICs)
Emergency Traffic
Mayday
Priority Radio Traffic
Resume Normal Radio Traffic
PAR
Tactical Withdraw (w/ alert tone)
Emergency Evacuation (w/ alert tone)

AWARE (air, water, a radio, extrication)
LUNAR (location, unit, name, air, resources)

RIC ACTIVATED

- Announce activation
- Designate FF Rescue Group Supervisor
- Request a Greater Alarm
- Staff another RIC team on deck
- Restaff other Groups/Divs tasked to FF Rescue
- Appoint Mayday Monitor if needed
- Staff up additional ICS positions as needed
- Notify Shift Commander and Executive Staff



Mayday Resolved

- Announce Mayday resolved
- Resume Normal Radio Traffic
- Provide medical attention / evaluation
- Relieve involved personnel (trapped/rescuers)
- Provide Rehab
- Evaluate Strategy
- Evaluate need for additional resources

Queues for Mayday Monitor / Downed Firefighter

- Who is trapped
- Number trapped/lost
- Last known location
- Estimate current location
- Activate PASS in 30 second increments
- Continue to search for exit
 - Listen for Firefighters
 - Search for doors
 - Search for windows
 - Find an exterior wall
 - Find area of refuge
 - Breach wall?
- Conserve air supply

Low Air / Risk of Unconsciousness

- Use hood as filter over facepiece
- Leave PASS on
- Get to an exterior wall, doorway or hall
- Lay down horizontal for PASS audibility
- Connect SCBA waist strap between legs
- Place hand light up or towards firefighters
- Use tool to tap/make noise