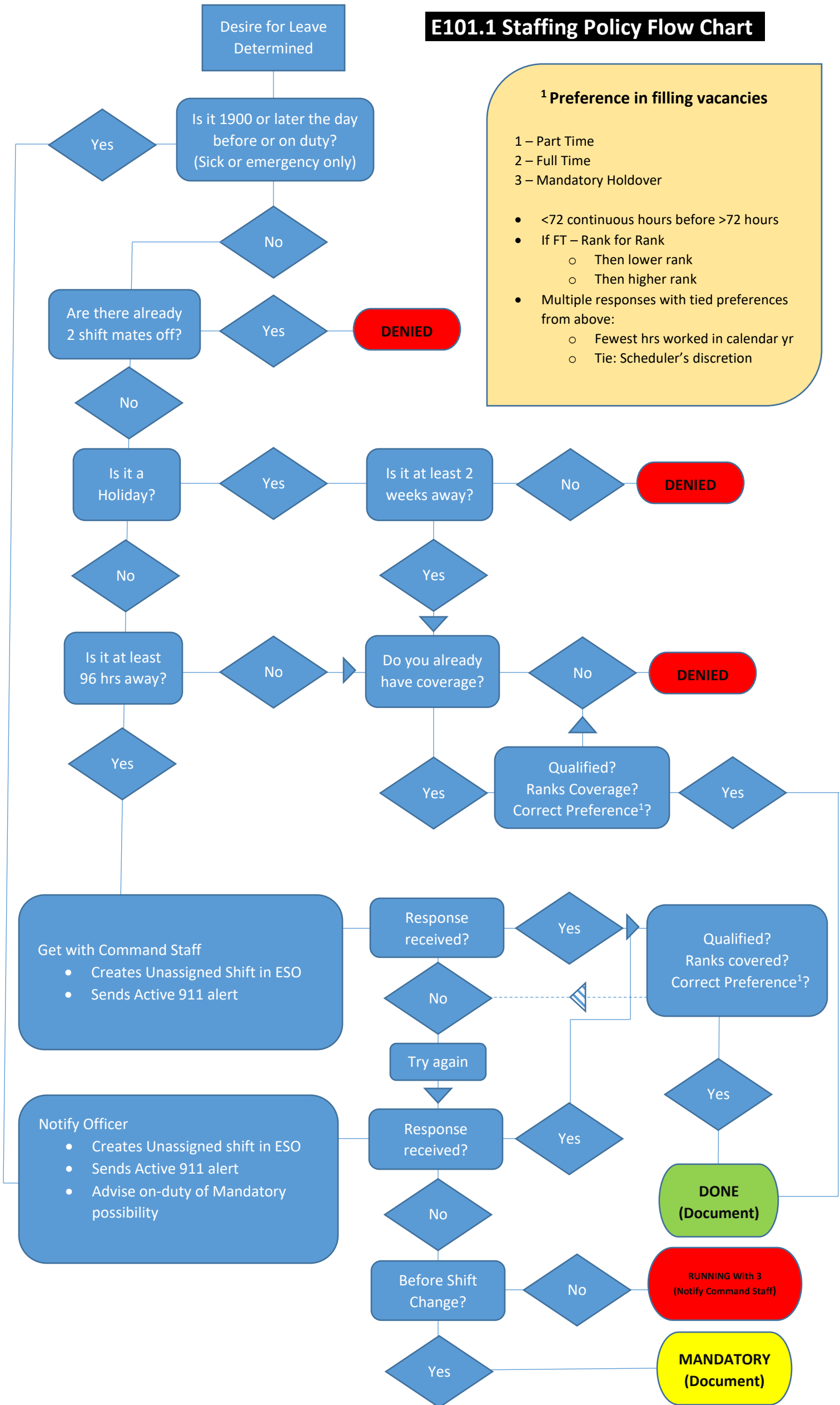


E101.1 Staffing Policy Flow Chart

¹ Preference in filling vacancies

- 1 – Part Time
- 2 – Full Time
- 3 – Mandatory Holdover

- <72 continuous hours before >72 hours
- If FT – Rank for Rank
 - Then lower rank
 - Then higher rank
- Multiple responses with tied preferences from above:
 - Fewest hrs worked in calendar yr
 - Tie: Scheduler's discretion



Use of the flowchart does not relieve the member from the full understanding and implementation of Policy E101.1 – Operations Staffing